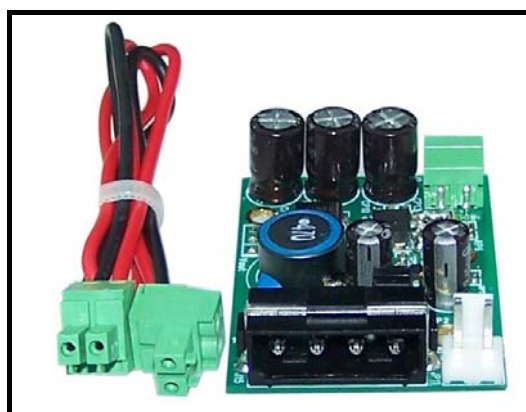


# OpenVox

深圳开源通信有限公司

*OpenVox-Best Cost Effective Asterisk Cards*

## OpenVox PFM100 User Manual



*Written by: James. zhu*

*Email: james. zhu@openvox. cn, zhulizhong@gmail. com*

*Date: 21/05/2008*

*Version: 0. 01*



深圳开源通信有限公司

*OpenVox-Best Cost Effective Asterisk Cards*

OpenVox Communication Co. Ltd.

Address: F/2, Building No. 14, Shangsha Science & Technology Park,  
No. 9283, Binhe Road, Futian District, ShenZhen , Guangdong 518048, China

Tel: +86-755-82535095, 82535461, Fax: +86-755-82535174

E-Mail: [sales@openvox.com.cn](mailto:sales@openvox.com.cn)

IM for Technical Support: [support@openvox.com.cn](mailto:support@openvox.com.cn), [zhulizhong@gmail.com](mailto:zhulizhong@gmail.com), [zhulizhongum@hotmail.com](mailto:zhulizhongum@hotmail.com)

Business Hours: 9:30AM-18:30PM from Monday-Friday

URL: [www.openvox.com.cn](http://www.openvox.com.cn)

*Thank You for Choosing OpenVox Products!*

## Table of Contents

Chapter 1	Overview.....	4
Chapter 2	Hardware Setting .....	4

## Chapter 1 Overview

### 1. What is PFM

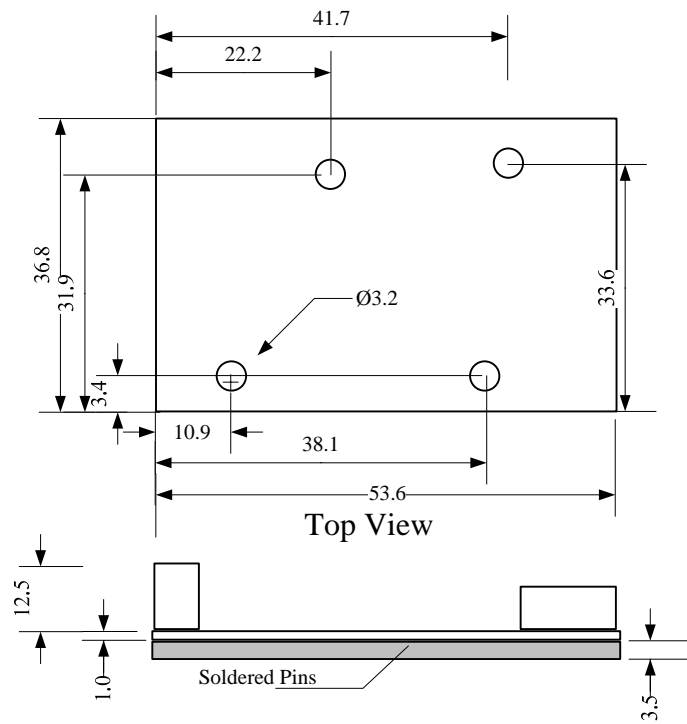
PFM100 is a power supply converter, which can be used for NT mode of B100M/B200M/B400M. Users should follow the steps:

- 1) Use the red-black 38V cable to connect to PFM100 and DC input on the B100MM/B200MM/B400MM.
- 2) Adjust the JP2, default is 12V, if you want to use 5 V, please adjust to 5V position. Check the details for input selection in jumper setting in chapter 2.
- 3) Plug in the Molex power supply into the 12V input. Usually, the PC power supply will provide the 12 V cable. It looks like this:

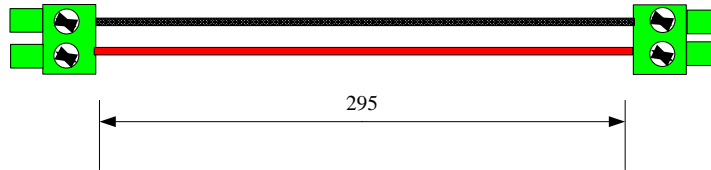


## Chapter 2 Hardware Setting

# PFM100 DIMENSIONS



To BX00M Board



To PFM100

Cable of 38V Output

ALL Measures In millimeters

## PFM100 Jumper Setting

